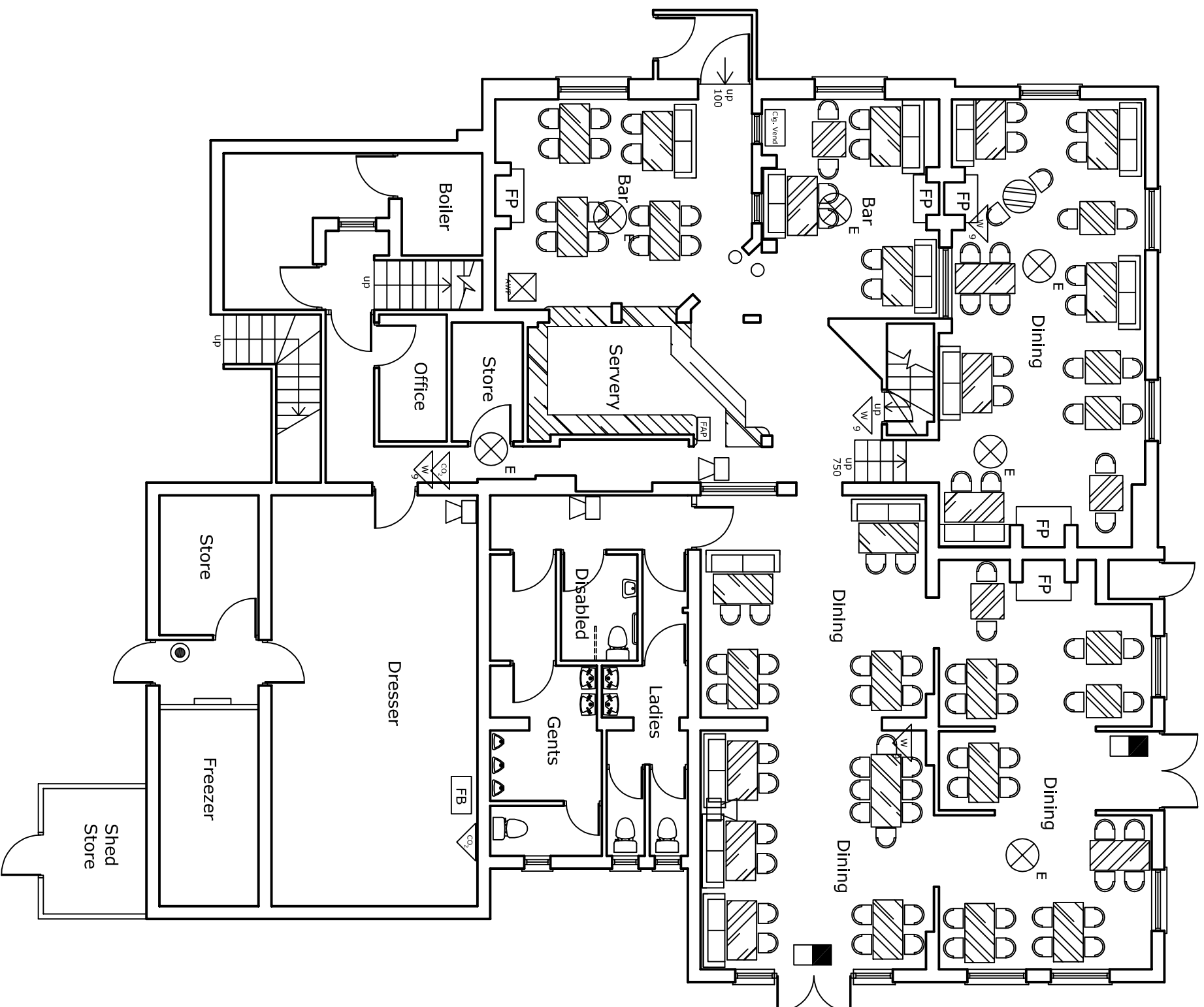


NOTE:
 The Contractor is to check and verify all building and fire dimensions, levels and floor levels for all construction prior to commencement, and this drawing must be read with and checked against any structural or other specialist drawings provided.
 The Contractor is to comply in all respects with the current Building Regulations whether or not specifically stated on these drawings.
 This drawing is not intended to show details of foundation or ground conditions. Each area of ground relied upon to support the structure of foundation is provided by the Contractor and suitable methods of foundation to be provided.

- LEGEND
- Fire Rated Doorset
 - FP
 - Fire Alarm Panel
 - Automatic fire detector
 - Manual Call Point
 - Sounder
 - Sounder Beacon
 - Emergency lighting (Fluorescent, Downlight or Luminaire)
 - Emergency Exit Light (See legend (directional))
 - Splice water fire extinguisher
 - Dry powder fire extinguisher
 - Carbon Dioxide fire extinguisher
 - Fram fire extinguisher
 - CTV camera
 - Mechanical extraction fan
 - Air-conditioning unit
 - Fire Rated Doorset
 - Furniture and Fittings
 - Gas Valve
 - Chimney Venting
 - Mechanic
 - Telephone
 - Games Machine (AWP or SWP)
 - Reel Table
- Services
- Fire Alarm Panel
 - Automatic fire detector
 - Manual Call Point
 - Sounder
 - Sounder Beacon
 - Emergency lighting (Fluorescent, Downlight or Luminaire)
 - Emergency Exit Light (See legend (directional))
 - Splice water fire extinguisher
 - Dry powder fire extinguisher
 - Carbon Dioxide fire extinguisher
 - Fram fire extinguisher
 - CTV camera
 - Mechanical extraction fan
 - Air-conditioning unit



Rev.	By	Date

Dist	Hall & Woodhouse
Household	4024
Site	The Jekyll & Hyde PH Turgis Green Basingstoke
Use	Ground Floor Layout Licensing

Effective Drinking Area = 170.3 sq.m.			
Project Name/Client	Drawn By	Scale	Date
6072/4024/01	AR	1:100@A3	28/05/05
Arch/Drawn	Checked	Drawn	Date
ROSE	MCH	AR	28/05/05